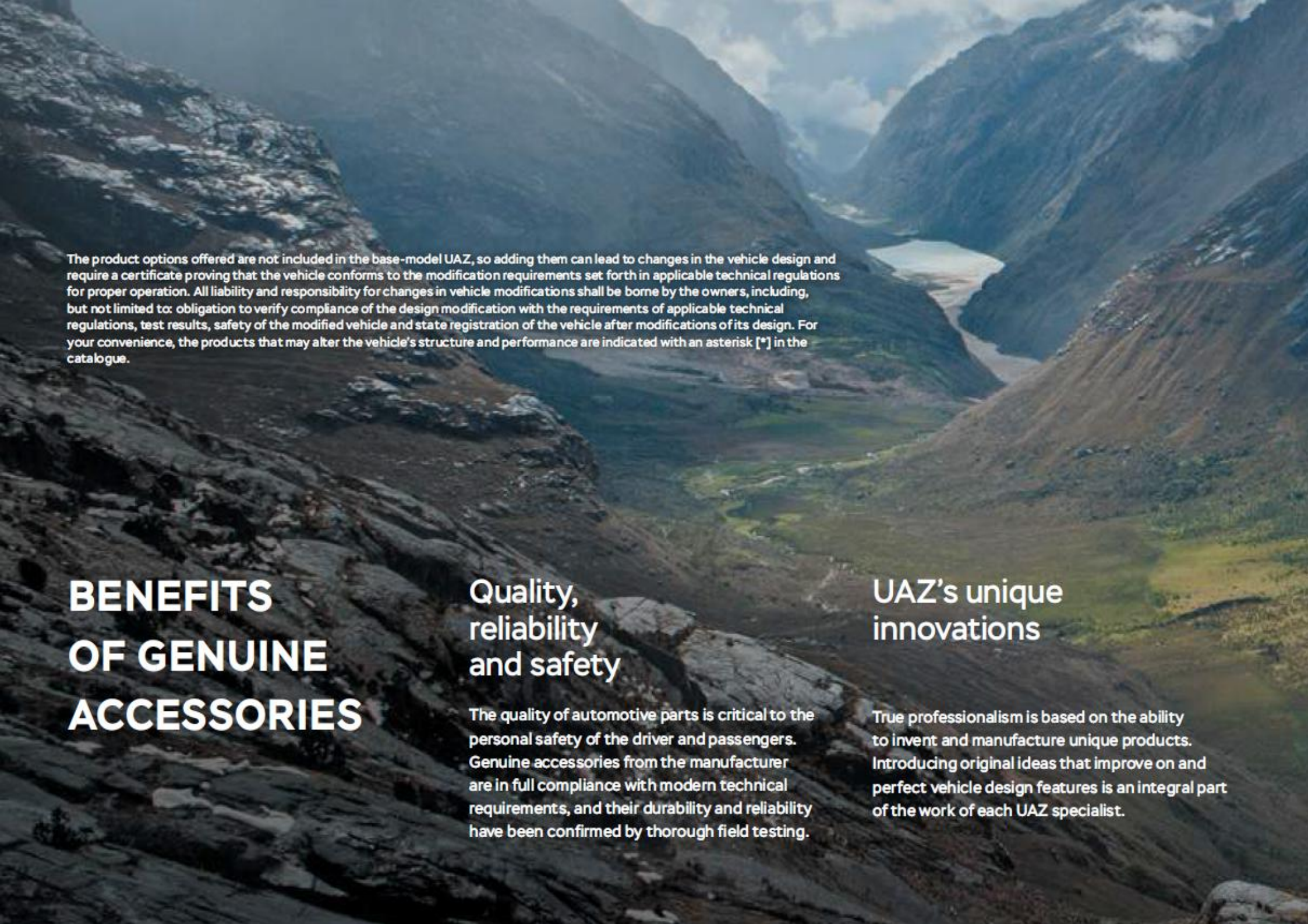


PATRIOT GENUINE ACCESSORIES



UAZ

www.uaz.be

A wide-angle photograph of a mountain valley. In the foreground, a steep, rocky mountain slope descends towards a river valley. The river flows through the center of the valley, surrounded by green grass and some small trees. In the distance, a small lake is visible, nestled between the mountains. The sky is blue with some white clouds. The overall scene is majestic and scenic.

The product options offered are not included in the base-model UAZ, so adding them can lead to changes in the vehicle design and require a certificate proving that the vehicle conforms to the modification requirements set forth in applicable technical regulations for proper operation. All liability and responsibility for changes in vehicle modifications shall be borne by the owners, including, but not limited to: obligation to verify compliance of the design modification with the requirements of applicable technical regulations, test results, safety of the modified vehicle and state registration of the vehicle after modifications of its design. For your convenience, the products that may alter the vehicle's structure and performance are indicated with an asterisk [*] in the catalogue.

BENEFITS OF GENUINE ACCESSORIES

Quality, reliability and safety

The quality of automotive parts is critical to the personal safety of the driver and passengers. Genuine accessories from the manufacturer are in full compliance with modern technical requirements, and their durability and reliability have been confirmed by thorough field testing.

UAZ's unique innovations

True professionalism is based on the ability to invent and manufacture unique products. Introducing original ideas that improve on and perfect vehicle design features is an integral part of the work of each UAZ specialist.

THE SPIRIT OF FREEDOM

Design and functionality

UAZ engineers and designers know that even the most miniscule accessory can provide great opportunities and a high level of functionality. We suggest that you try a combination of rugged upgrades for UAZ off-road vehicles and high-tech options of the future.

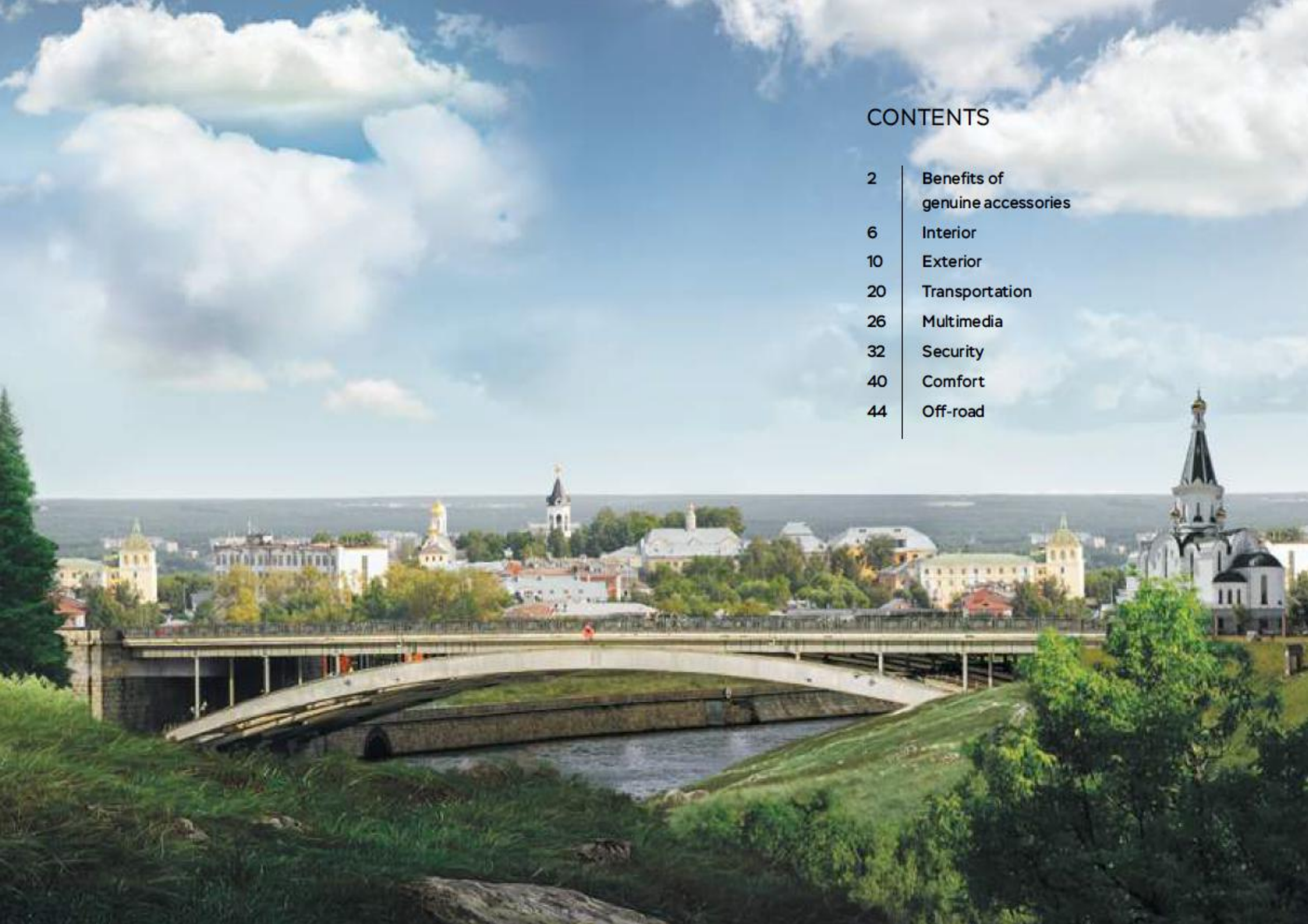
Warranty obligations

UAZ Patriot genuine accessories are of the highest quality and have proven reliability. It is important for all UAZ upgrades to function flawlessly, so we extend our own guarantee and duly fulfill all service obligations.

Attractive prices

Auto accessories produced by the manufacturer are of the highest level of reliability, guaranteeing both high quality and affordable prices. Why pay more if the optimal choice is original upgrades?



A scenic view of a city, likely Tallinn, Estonia, featuring a large stone bridge over a river. The city is built on a hillside, with various buildings and churches visible in the background. The sky is blue with scattered white clouds.

CONTENTS

2	Benefits of genuine accessories
6	Interior
10	Exterior
20	Transportation
26	Multimedia
32	Security
40	Comfort
44	Off-road



The image shows the interior of a car, specifically the dashboard and center console area. The background is blurred, suggesting the car is in motion. The text "Power with comfort" is overlaid in large white letters. Below it, the word "INTERIOR" is written in smaller white letters. To the right of "INTERIOR", there is a paragraph of text in white, describing the car's interior customization options.

Power with comfort

INTERIOR

UAZ has proven that a rugged vehicle made to go off-road can also be truly comfortable. With UAZ genuine accessories you can create your own personalized space, selecting only the customizations that are to your taste, from the upholstery type to the floor mat texture.



1

1 SEAT COVERS

Eco-leather is a hypoallergenic breathable material that offers all the benefits of genuine leather with none of its drawbacks. Visually, eco-leather is indistinguishable from natural leather. Seat upholstery made from eco-leather is characterized by high wear resistance, can withstand temperature extremes, is pleasant to the touch and contains no harmful chemicals. The covers are made specifically for the contours of the UAZ Patriot seat. The kit includes covers for: 2 front seats (top and bottom) 2 front headrests, separate upper rear seats, 1 rear armrest, separate lower rear seats and 3 rear headrests.

316300-4735002-00



2

2 OVERHEAD CONSOLE

Genuine console with two brackets for attachment to the ceiling helps organize the space in the passenger compartment: a document tray, an interior light and an eyeglass case will be useful for any road trip; a convenient location for a radio and 12V socket will also come in handy for extended journeys.

316300-4740000-00

3 CARGO MAT

A durable and lightweight cargo mat protects belongings, tools, and other household items in the trunk. In addition, the mat protects the floor of the car from fluids or wear and tear that may occur during transportation of cargo.

316300-4728002-00

3

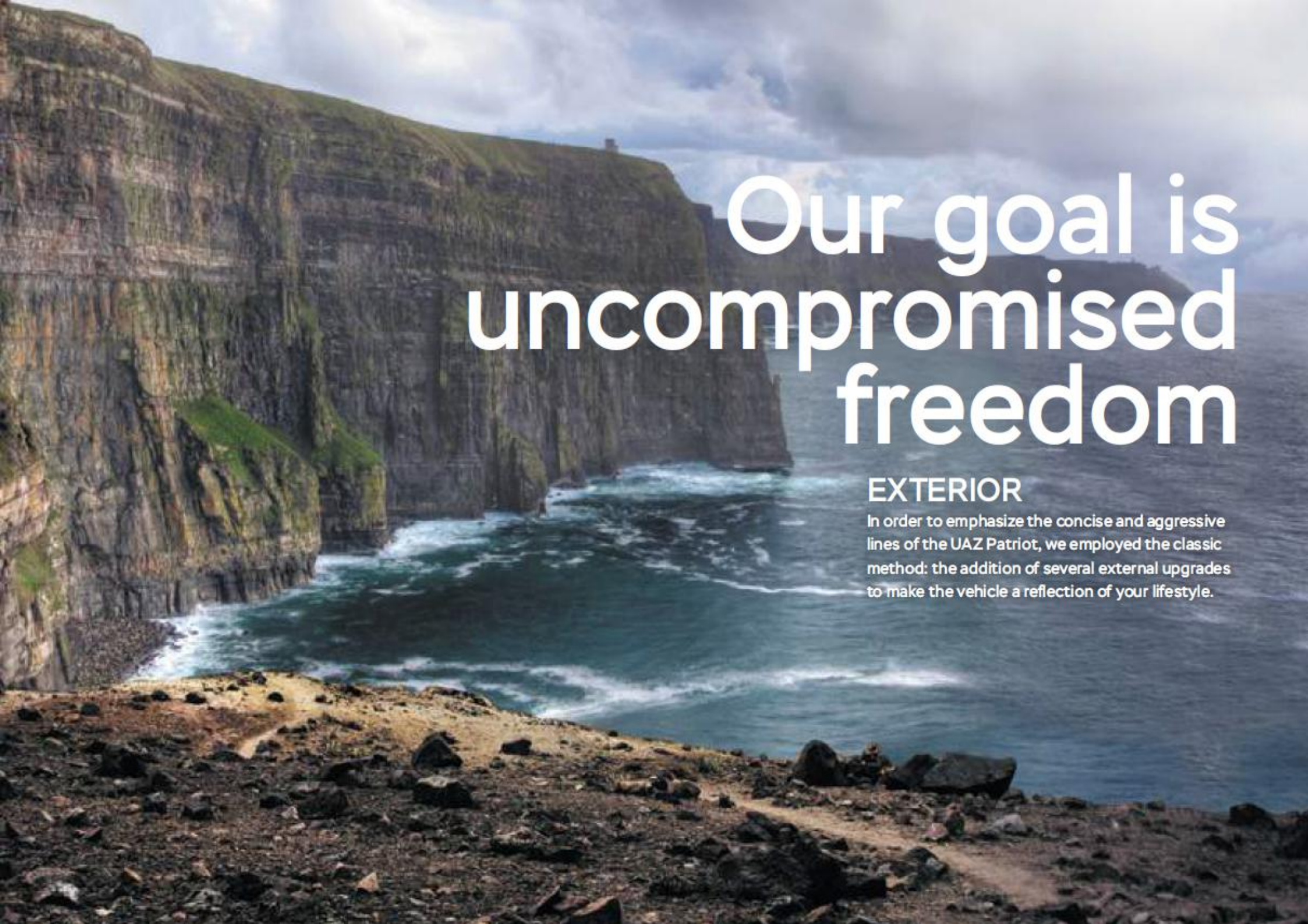
4 ALL-WEATHER FLOOR MATS

All-weather floor mats serve several important functions: they protect the interior from dirt and moisture, are easy to clean and also protect the car from rust and decay. Our interior protection was specially designed to minimize mud and water flow along the surface of the mat, thus preventing spillover. Regardless of which muddy path you have walked, the mat depth will be enough to prevent large volumes of liquid from saturating the interior, keeping it dry and clean.

316300-4728006-00

4





Our goal is uncompromised freedom

EXTERIOR

In order to emphasize the concise and aggressive lines of the UAZ Patriot, we employed the classic method: the addition of several external upgrades to make the vehicle a reflection of your lifestyle.



1

1 HOOD DEFLECTOR

Protective hood deflectors preserve the paintwork, hood and windshield from flying debris such as insects, gravel, sand and dust, which strike the vehicle when bouncing from other automobiles or rough road terrain.

316300-4727005-00

2 WINDOW DEFLECTORS

Window deflectors protect the interior from drafts, noise, rain and road dust. In addition, rain guards enhance exterior appearance. With deflectors, the vehicle's exterior lines become more harmonious.

316300-4727003-00



2

3 REAR SPOILER

316400-8419010-00

Available in the following colors:

-  Black metallic
-  Brown metallic
-  Dark gray metallic
-  Dark green metallic
-  Yellow-silver metallic
-  White metallic
-  Brown-gray metallic





4

4 SIDE PROTECTION RUNNERS

Side protection runners are made of high-quality polished stainless steel. They provide reliable protection for the side threshold from stumps, boulders and stones.

316300-4715021-00

Ø 42



5

5 CORNER SPOILER GUARDS

Corner spoiler guards made of stainless steel are mounted to the rear bumper and do not require drilling for installation. This is a small part which both protects the bumper and provides an attractive addition to the car on the road.

316300-4715023-00

Ø 76



6

6 MUD FLAPS

Mud flaps are custom designed for the measurements of your vehicle and are practical and easy to install. They protect the car body from chips and dirt both in urban environments and off-road.

316000-8404421-00 (REAR LEFT)

316000-8404420-00 (REAR RIGHT)

316300-8404321-00 (FRONT LEFT)

316300-8404320-00 (FRONT RIGHT)



7

7 FRONT BUMPER GUARD

The front bumper guard: this is what safety looks like in an urban environment and off-road. The guard bar is made of high quality durable steel and attaches directly to the front bumper.

316300-4715020-00

Ø 76

A sure way to give the vehicle some additional "muscle" is by installing original alloy wheels designed for the UAZ Patriot. They are perfectly in tune with the overall appearance of the car and optimally match its parameters. Besides their bold appearance, the wheels maintain the vehicle's reliability after hitting potholes and other road hazards. The alloy wheels create a perfect shape and their lightweight construction helps improve the car's handling.



8 ALLOY WHEEL R18 KALAHARI

10-spoke wheel. Color: silver. Wheel: 7J x 18 H2 ET 35 Tire: 245 / 60 R18

316300-3101015-20

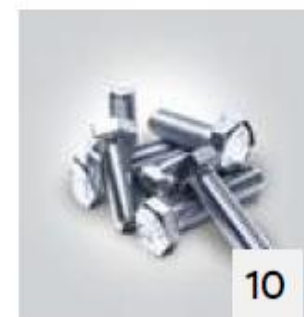
316300-3102010-10 (wheel center caps)

000100-0032770-01 (2 bolts)



9 ALLOY WHEEL NUT

316300-3101040-70



10 WHEEL CENTER CAPS BOLTS

000100-0032770-01

11 ALLOY WHEEL R18 SAHARA

10-spoke wheel

Color: silver

Wheel: 7J x 18 H2 ET 35

Tire: 245 / 60 R18

316300-3101015-21

12 WHEEL CENTER CAP SAHARA

316300-3102010-20



12



11



13



15



14

13 ALLOY WHEEL R16 DIAMOND

10-spoke wheel. Color: black with diamond cut finish
Wheel: 7J x 16 H2 ET 35
Tire: 235 / 70 R16 245 / 70 R16

316300-3101015-72

14 R16 DIAMOND WHEEL CENTER CAP

316300-3102010-72

15 ALLOY WHEEL R16

5-spoke wheel
Color: silver
Wheel: 7J x 16 H2 ET 35
Tire: 235 / 70 R16; 245 / 70 R16

236300-3101015-10



16



18



17

16 ALLOY WHEEL R16

10-spoke wheel
Color: silver
Wheel: 7J x 16 H2 ET 35
Tire: 235 / 70 R16; 245 / 70 R16

316300-3101015-10

17 WHEEL CENTER CAP R16

316300-3102010-10

18 STAMPED STEEL WHEEL R16

Stamped
Color: gray
Wheel: 1/2 J x 16 H2 ET 40
Tire: 235 / 70 R16; 245 / 70 R16

316220-3101015-06





We open up a world full of adventures

TRANSPORTATION

Specially designed accessories for transportation eliminate the inconveniences associated with the transport of any cargo: from small luggage to a bike or a boat. You want to bring your pet on a trip and don't want a mess in the interior of the vehicle? We have taken care of it.



1 ACCESS LADDER*

The ladder mounts to the rear vehicle door. With convenient adjustability, you can quickly and easily get to the cargo. The high quality coating allows easy use of the ladder, regardless of the temperature and weather conditions.

000000-4723054-00

2 EXPEDITION ROOF RACK*

A rock-solid and ultra-convenient rack is necessary to transport any cargo, such as a tent for a fishing trip or equipment for hunting. Eight mounting legs and durable fasteners provide uniform load distribution and protect the load when driving over rough terrain. There are dedicated positions for attaching additional spotlights, shovel, and rack jack, for which installation requires no additional tools. The rack floor is covered with steel mesh, which will securely contain the load on any road. The roof rack itself is protected by a special shock-resistant powder coating, so the rack will remain resilient under extreme conditions.

316300-4723008-00







3, 4 CROSSBARS FOR ROOF RAILS

Practical aerodynamic anodized crossbars are made of aluminium formed tubing capped with plastic plugs at the ends and fitted with a removable rubber strap at the top which allows to use a T-shaped adapter. Aerodynamic shape similar to an airplane wing reduces air flow resistance. The square crossbars made from high-strength steel have a tough polymer coating and are particularly durable.

316300-4723054-00 (aero)

316300-4723055-00 (square)

5 ROOF RAILS

Will you need to carry a lot of cargo? Roof rails are mounted on the top of the car and are used to secure transport containers and other types of cargo on the roof.

316300-8221111-10 (left)

316300-8221110-10 (right)

6 TOW BAR*

The tow bar is designed for coupling the car with a trailer. This product was specifically designed for particular models of UAZ vehicles, taking into account all relevant design features and load capacity.

316300-4723044-00





We choose possibilities for the future

MULTIMEDIA

A vehicle is not just a means of transport, but also a channel through which we can experience the world. In the 21st century, a road trip is inconceivable without a convenient multimedia system at your fingertips. Movies, music, internet, video surveillance, navigation – with UAZ, all of this is available anywhere at any time.





1 2DIN MULTIMEDIA SYSTEM WITH NAVIGATION

Long off-road trips and urban traffic jams – everything becomes more enjoyable with a multi-functional multimedia system with SD, USB port and 2DIN (with preinstalled Navitel software).

316300-7901020-70 (2016 and later)

316300-7901020-50 (before 2016)

2 2DIN MULTIMEDIA SYSTEM

It is easy to be in the catbird seat: 2DIN radio with integrated USB ports will not let you miss the latest news or get lost along the way.

316300-7901020-80 (2016 and later)

316300-7901020-40 (before 2016)



3

3 ANTENNA

You need an antenna when you want to hear not only the sound of the engine, but also your favorite radio station. When choosing a passive antenna (e.g., pin), it is recommended that you also purchase a signal amplifier. The antenna is installed on the roof in the rear of the vehicle and can be easily removed when necessary, with the hole being plugged.

316300-7903030-00

4 REAR VIEW CAMERA

The camera sends the image from behind the car to a video monitor in the cabin. This is useful for a broad clear view to back up safely in tight urban environments or in areas with obstacles.

316300-3775010-00



4

5 SPEAKERS

For connoisseurs of sound: speakers for rear doors (left and right) will fill the car interior with your favorite music, creating a pleasant atmosphere on the journey for the driver and passengers.

316300-7909030-00

316300-7909020-10

316300-7909020-20 (HF)

316300-7909021-20 (HF)





Our passion – No bounds in confident driving

SECURITY

Your vehicle is your second fortress. We have provided all possibilities to deter thieves, denying them any chance of breaking in to your vehicle. During a stop or while on the road, you can always feel safe. What could be more important than that?



1

1 PHARAON LC100 CAR ALARM SYSTEM

Fully remote control displaying real-time status of the vehicle. It can protect the vehicle while the engine is running without the key in the ignition. The "Anti Car-hijack" function has three activation modes.

000000-4731062-00

2 ENGINE IMMOBILIZER BY-PASS MODULE BP-3

000000-4731065-00



3

3 SCHER-KHAN CAR ALARM SYSTEMS

LOGICAR 1	000000-4731058-00	automatic engine start
LOGICAR 5I	000000-4731060-00	optional automatic engine start
LOGICAR 6I	000000-4731061-00	CAN-module
MAGICAR 11	000000-4731052-00	radio encryption – MAGIC CODE™ PRO 3
MAGICAR 12	000000-4731053-00	encryption algorithm MAGIC CODE™ PRO 3
MAGICAR 13	000000-4731054-00	encryption algorithm MAGIC CODE™ PRO 3
MAGICAR 14	000000-4731055-00	encryption algorithm MAGIC CODE™ PRO 4
MAGICAR 7H	000000-4731056-00	encryption algorithm MAGIC CODE™ PRO 2
MAGICAR 8H	000000-4731057-00	remote communication with the processing unit, up to 2000 m

4 ENGINE IMMOBILIZER BY-PASS MODULE BP-2

Engine immobilizer by-pass modules facilitate installation of remote or automatic engine start.

000000-4731064-00



5

5 STARLINE CAR ALARM SYSTEMS

STARLINE A36	000000-4731029-00	without automatic start
STARLINE A39	000000-4731031-00	2CAN-interface optional GSM / GPS-interface
STARLINE A36LIN	000000-4731038-00	operating range – 2000 m, without automatic start
STARLINE A39LIN	000000-4731039-00	interactive security system
STARLINE B64	000000-4731012-00	512-channel jam-proof transceiver
STARLINE B94	000000-4731013-00	optional GSM / GPS
STARLINE B94GSM	000000-4731014-00	built-in GSM
STARLINE B94GSM/GPS	000000-4731015-00	optional GSM / GPS
STARLINE D94GSM	000000-4731016-00	integrated multi-system 2CAN-interface
STARLINE D94GSM/GPS	000000-4731017-00	2SUPER SLAVE mode
STARLINE E60	000000-4731018-00	rapid integration of CAN, GSM and GPS interfaces
STARLINE E90	000000-4731019-00	optional Super Slave
STARLINE E90GSM	000000-4731020-00	simple and fast integration

An alarm system is a simple and reliable way to protect your vehicle from break-ins and theft; it is your additional insurance. All you need to do is choose the best device option based on your own preferences and the conditions which the vehicle gets into.

6 IMMOBILIZER

Just like the Alarm System itself, the immobilizer is an important part of the antitheft system. This safety device disables the basic functions of the vehicle when someone attempts to operate it without the owner's knowledge. For even greater confidence in knowing the vehicle's exact location, a GPS tracker is recommended.

IMMOBILIZER I95	000000-4731044-00
IMMOBILIZER I95ECO	000000-4731043-00
IMMOBILIZER I95LUX	000000-4731045-00

7 M17 GPS TRACKER

000000-4731024-00



8

8 PARKING ASSISTANCE SYSTEM

Comfort while driving means not only high-speed and responsive steering, but also quick and convenient parking in a big city. The parking assistance system is a universal assistant which turns parking into a simple and convenient process.

000000-4726011-00 (4 SENSORS, COLOR: WHITE)
 000000-4726010-00 (4 SENSORS, COLOR: SILVER)
 000000-4726009-00 (4 SENSORS, COLOR: BLACK)
 000000-4726014-00 (LED-DISPLAY, 4 SENSORS, COLOR: WHITE)
 000000-4726013-00 (LED-DISPLAY, 4 SENSORS, COLOR: SILVER)
 000000-4726012-00 (LED-DISPLAY, 4 SENSORS, COLOR: BLACK)

000000-4726015-00 (LCD-VOICE MODULE, 4 SENSORS, COLOR: BLACK)
 000000-4726016-00 (LCD-VOICE MODULE, 4 SENSORS, COLOR: SILVER)
 000000-4726017-00 (LCD-VOICE MODULE, 4 SENSOR, COLOR: WHITE)
 000000-4726018-00 (LCD-VOICE MODULE, 8 SENSORS COLOR: BLACK)
 000000-4726019-00 (UAZ LCD-VOICE MODULE, 8 SENSORS, COLOR: SILVER)
 000000-4726020-00 (LCD-VOICE MODULE, 8 SENSORS, COLOR: WHITE)



9



10

9 PARKING SENSORS WITH WIRES

Sensors help you gain complete control when navigating obstacles in front of and behind the car.

000000-4726021-00 (2.5m, color: black)

000000-4726022-00 (7.5m, color: black)



11

10 FRONT PARKING SENSOR DEACTIVATION MODULE

000000-4726023-00

11 BLIND SPOT MONITORING SYSTEM

The blind spot monitoring system gives you full information about traffic or other obstacles near the vehicle while driving.

000000-4726006-00



12

12 FUEL TANK GUARD SHEET

The guard sheet protects fuel tank from external damage. The steel skid plate is 3 mm thick and has high impact resistance due to the protective fins on the perimeter.

3163004-736028-00



13

13 TRANSMISSION/TRANSFER GEARBOX GUARD SHEET

The transmission and transfer gearbox guard sheet protects vital parts of the car.

3163004-736029-00



Critical parts of the vehicle demand solid protection, because collisions with obstacles are part of the very nature of the powerful UAZ Patriot. The transmission, transfer case, steering rods and fuel tank should all be well protected. The protection of steering rods is necessary for their safety and proper operation when encountering rough terrain and obstacles. We offer two types of protection: steel pipe or sheet steel skid plates.

14 STEERING RODS GUARD PIPE

This protects the low-lying chassis from damage caused by collisions with debris on the road. This protection is constructed from steel pipes with a diameter of 42 mm.

316300-4736027-00



15 STEERING RODS GUARD SHEET

The skid plate is made of 3 mm thick sheet steel. Pressed and folded construction provides structural integrity and high impact resistance.

316300-4736018-00





UAZ Patriot – an automobile with soul

COMFORT

Little things that don't seem important at first glance can truly make our lives enjoyable. Within the small space of an automobile, we feel this particularly acutely: a warm seat in cold weather and a cigarette lighter close at hand can certainly make your day brighter.



1

Many accessories which might seem unnecessary at first glance in fact make the lives of drivers more comfortable. Even a nonsmoking driver needs a cigarette lighter: it can be used to charge a phone or power a refrigerator, laptop or GPS receiver. Gas struts under the hood will enable you to easily take a look under the hood and check the engine. Well-equipped driver emergency kit will rescue anyone in need anywhere.

For a flat tire not to spoil a pleasant trip, a prudent car owner keeps a tire compressor in the trunk to pump up tires in minutes.



2

1 TIRE COMPRESSOR 000000-4726002-00 (10 ATM)

2 TIRE COMPRESSOR 000000-4726001-00 (7 ATM)

3 GAS STRUTS 316300-8407108-40

4 DRIVER EMERGENCY KIT 000000-4724002-00

- Fire extinguisher, powder
- Auto first aid kit
- Triangle hazard sign
- Towing cable, 5t (with hooks)
- Safety vest with reflectors
- Work gloves
- Storage bag (with a zipper)



4



3



5

5 MULTICONTROL TIMER

This programmable timer is located on the dashboard or console, controlled by a tilt-and-push knob and TFT-LCDs.

000000-4732008-00

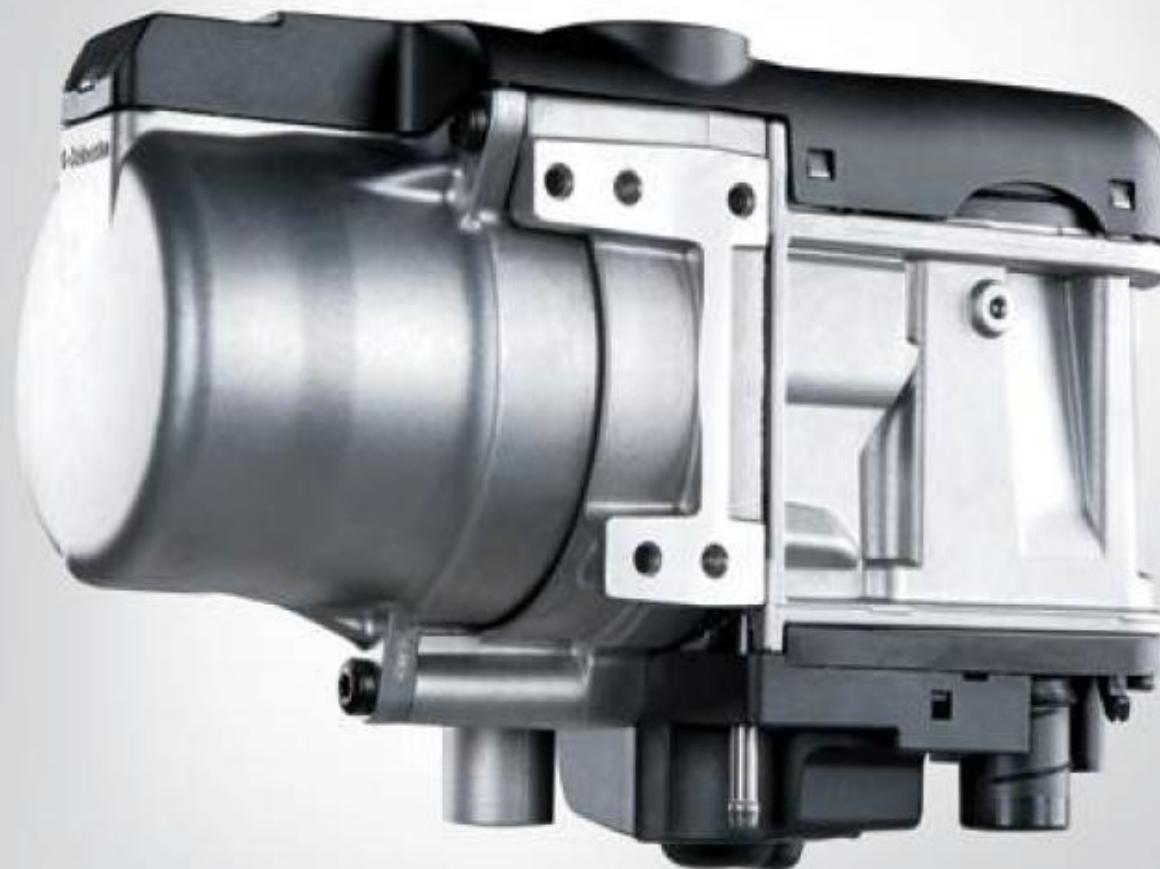
6 TT-EVO 4 KW HEATER

An engine preheater improves the safety, performance, comfort, economy, durability and environmental friendliness of the vehicle. It allows a significant reduction in fuel consumption, the overall load on the battery, engine wear and emissions. The interior of the vehicle is warm, the windows free from snow and ice, the windows are clear, and the windshield wipers do not freeze to the glass, thereby providing an unobstructed view during the entire trip.

000000-4732003-00 – DIESEL

000000-4732002-00 – GASOLINE

6







We are ready to leave our mark on history

OFF-ROAD

Have you been dreaming of a long road trip? The UAZ Patriot is designed for unforgettable journeys! The pleasure of fishing, picnicking or hunting depends on the capabilities of your vehicle. Here you will find everything to help realize your plans and make even a long journey comfortable and enjoyable.

TigerShark series 9500 / LP8500 Automotive electric winch*

This series is the optimal choice for those who need a simple and reliable winch at an affordable price. Winches are ideal for hunting trips, fishing or other outings. The TigerShark series has long been appreciated by US off-road fans: the winch has received multiple different prizes, including Rock Solid.



1 TigerShark 9500 Electric winch*

000000-4723027-00

Nominal pulling load	4 300 kg
Gear ratio	218:1
Transmission	planetary gears
Motor	12V 5.2 horsepower
Remote Control	hard-wired 3.6 m
Dimensions	529 x 160 x 234.5 mm
Drum Size	F63.5 x 228.6
Weight	41 kg
Cable	8.3x28 mm/m



2

Automotive electric winch, series X-9/ S9000*

Winches from the heavy-duty series are real classics. For more than 15 years this series has been in steady demand in markets with high expectations for reliability in Australia, Asia and the Middle East. The winch design provides a margin of reliability well above normal demands. The X-9 / S9000 series is made exclusively in the United States, at the oldest facility in Dayville, Connecticut.

2 WINCH (4082 kg)*

000000-4723023-00

Nominal pulling load
Gear ratio
Transmission
Motor
Remote Control
Dimensions
Drum Size
Weight
Cable

4100 kg
253:1
planetary gears
12V 4.2 horsepower
hard-wired 4.6 m
581 x 171 x 168 mm
F64 x 229
37 kg
7.9x30.5 mm/m



3

3 WINCH (electric Ip 8500)*

000000-4723025-00

Nominal pulling load
Gear ratio
Transmission
Motor
Remote Control
Dimensions
Drum Size
Weight
Cable

3800 kg
235:1
planetary gears
12V 4.5 horsepower
hard-wired 3.7 m
541 x 160 x 218 mm
F67 x 224
33.11 kg
7.9x27 mm/m



Automotive electric winch, T-MAX series

The T-MAX winch series means innovative design and impeccable workmanship. This series is in great demand in the United States, Australia, and Europe and is a must-have for off-road trips.

4 WINCH*

000000-4723022-00

Nominal pulling load	3800 kg
Gear ratio	161.28:1
Transmission	planetary gears
Motor	12V 5.6 horsepower
Remote Control	hard-wired 3.7 m
Dimensions	529 x 161 x 200 mm
Drum Size	64 x 224
Weight	36 kg
Cable	8 x 28.5 mm/m

5 WINCH (hew-12500 x power)*

000000-4723021-00

Force capacity Lb. / Kg	12500 / 5665
Motor	6.6 horsepower
Remote Control	3.7 m
Transmission	planetary gears
Gear ratio	193.6:1
Brake	automatic
Diameter/width of drum	63.5x222
Weight	38 kg
Cable length / diameter	24 / 9.2
Recommended battery	650 CCA
Power supply wire	1.83 m
Dimensions L x W x H (mm)	542x160x218

6 WINCH (portable atw pro 2500 with unit)*

000000-4723056-00

Cable length / diameter	15 m / 4.7 mm
Transmission	planetary gear
Drum Size	64 x 224
Weight	36 kg
Recommended battery	660 CCA
Dimensions L x W x H (mm)	548 x 158 x 260



7

Automotive electric winch, Avtospas series

The 'Rysak' winch series from Avtospas is intended as a means of self-winch for light off-road vehicles weighing up to 3500 kg. The series provides a winch with a pulling force from 3800 to 5300 kg. The various models were developed to meet the demands of tow trucks and specialized vehicles manufacturers. The reliability of the winch has been proven by many years of use in the harshest conditions.

7 WINCH (electric planetary gear lpe45vi Rysak 12v)*

000000-4723029-00

Force capacity Lb. / Kg	10000 / 4545
Motor	5.1 horsepower
Remote Control	hard-wired
Transmission	planetary gear/3 stages
Gear ratio	197 / 1
Diameter / width	63 x 222
Weight	41 kg
Cable length / diameter	9.2 x 26
Dimensions L x W x H (mm)	560 x 157.5 x 203 mm



8

8 WINCH (electric planetary gear lpe38v Rysak 12v)*

000000-4723028-00

Force capacity Lb. / Kg	8500 / 3800
Motor	5.0 horsepower
Remote Control	hard-wired
Transmission	planetary gear/3 stages
Gear ratio	196 / 1
Diameter / width	63 x 222
Weight	41 kg
Cable length / diameter	8.1 x 29
Dimensions L x W x H (mm)	548 x 158 x 260



9 CABLE GUIDE

000000-4723012-00



10 DAMPENER

Despite the fact that the cables and lines are very strong, precautions must be taken. Dampeners are a protective cape on the cable affixed to it before it is attached to the load. In case of a cable or sling rupture the dampener bears the brunt of the shock wave and significantly reduces the springback.

000000-4723010-00 (superwinch)

000000-4723011-00 (t-max)



11 WINCH MOUNT KIT

The mount kit allows for the installation of winches on the UAZ Patriot.

316300-4723019-00

(s9000, x9, ts 9500, lp 8500, hew-8500)

316300-4723020-00

(lpe38v, ts 9500, lp 8500, hew-8500)

12 SHACKLE

Used for fast connection or tying off the towing eye for any kind of cables.

000000-4723050-00 (medium 5/8 3.25 tn)

000000-4723051-00 (standard 4.75)



13 4-INCH PULLEY BLOCK

A pulley block can increase the pulling force of the winch to 8000 kg.

000000-4723009-00



14 TOW STRAP, 6cm x 9m, 8000

Tow strap made of nylon with high elasticity can not only tow a vehicle without abrupt movements, which are almost inevitable in the case of shifting cables while towing, but also make it possible to remove a vehicle stuck in the mud without damage.

000000-4723041-00



15



17



19



16



18



20

15 WINCH CIRCUIT BREAKER SWITCH

Prevents inadvertent starting of the winch.

000000-4723037-00

17 POWER EXTENSION

Extensions for moving the control switch remotely for the winch series.

000000-4723046-00

remote control panel connector LP

000000-4723047-00

remote control panel connector X-power

000000-4723048-00

remote control panel connector Avtospas

16 WINCH TREE CABLE 8cmx3m, 12000 kg

When using the winch, the sling enables you to pull and free the vehicle while protecting the tree from damage.

000000-4723042-00

18 WIRELESS CONTROL

Suitable for any winch with a power supply of 12 V. Operates on the FM radio band.

000000-4723040-00

19 ACCESSORY KIT WITH ELASTIC CABLE 8000 kg

Complete kit of winch accessories includes a pulley, clevises, cable and bag.

000000-4723035-00

20 WINCH GUIDE ROLLERS 8500-12500

000000-4723036-00



21 SIDE RAILS FOR UAZ PATRIOT (AFTER 2014 MODEL YEAR)*

Side rails are used to protect the vehicle from contact with rocky surfaces or trees when driving in rough off-road conditions.

000000-4737031-00

22 SNORKEL*

The snorkel is an exterior air intake, which will turn your vehicle into a powerful amphibious beast. The housing of the snorkel is made of flexible polyethylene and the fasteners are manufactured from stainless steel.

316300-4737004-00



23

23 SAND TRACK 120 CM (ALUMINUM)

Sand tracks are placed beneath the wheels of the vehicle in order to eliminate slipping. Aluminum sand tracks are 4 mm thick, providing rigidity.

000000-4737030-00



24

24 SAND TRACK 120 CM (COMPOSITE)

Composite sand tracks are made of fiberglass 8 mm thick and have comparatively low weight.

000000-4737030-00



24

24 ACCESSORY KIT (PULLEY, CLEVISES, CABLE, HOOK, GLOVES)

Complete kit of the necessary accessories for use with a winch.

000000-4723034-00

25 T-MAX OFF-ROAD HD JACK 120 CM

Off-road jacks are irreplaceable in off-road conditions: they allow you to lift a vehicle by the bumper, which is convenient if the vehicle is stuck in the mud up to the door edge and it is not possible to set a jack under the axles or chassis. Off-road jacks have a significant load capacity depending on the height.

000000-4723052-00



25



27

27 OFF-ROAD JACK FASTENERS

Fasteners allow you to store the jack in a convenient and easily accessible location, reliably protecting it from theft.

000000-4723017-00

000000-4723018-00

(fastener for tubular bars)



OFF-ROAD

28

28 WHEEL LIFT KIT FOR OFF-ROAD JACK

These straps allow you to lift the car directly by the wheel, greatly reducing the range of movement of the lifting mechanism, which is necessary for an adequate and safe lifting height for the wheel.

000000-4723053-00

**You can buy original UAZ spare parts and accessories from an authorized dealer
or in the official online store at www.uaz.be**

**UAZ Benelux
Tel +32 (0)3 291 22 21
Email info@uaz.be**

316300-4701015-00 UAZ PATRIOT ACCESSORIES CATALOGUE

The information provided in this catalogue is valid at the time of publication. The manufacturer reserves the right to modify this information. For more information, contact an authorized UAZ dealer. The products in the photographs may differ from the actual characteristics of the products depicted, including, but not limited to, deviations of the natural color of the product from its production. The information contained in the descriptions of products in the catalogue and concerning their technical characteristics, size, etc., is based on nominal values and may differ from the characteristics of a particular manufactured item. Differences between a specific manufactured item and its description on the website do not affect the functional quality of the product and do not constitute evidence of a defect in the products. The manufacturer reserves the right to make changes to the product.
December 2016